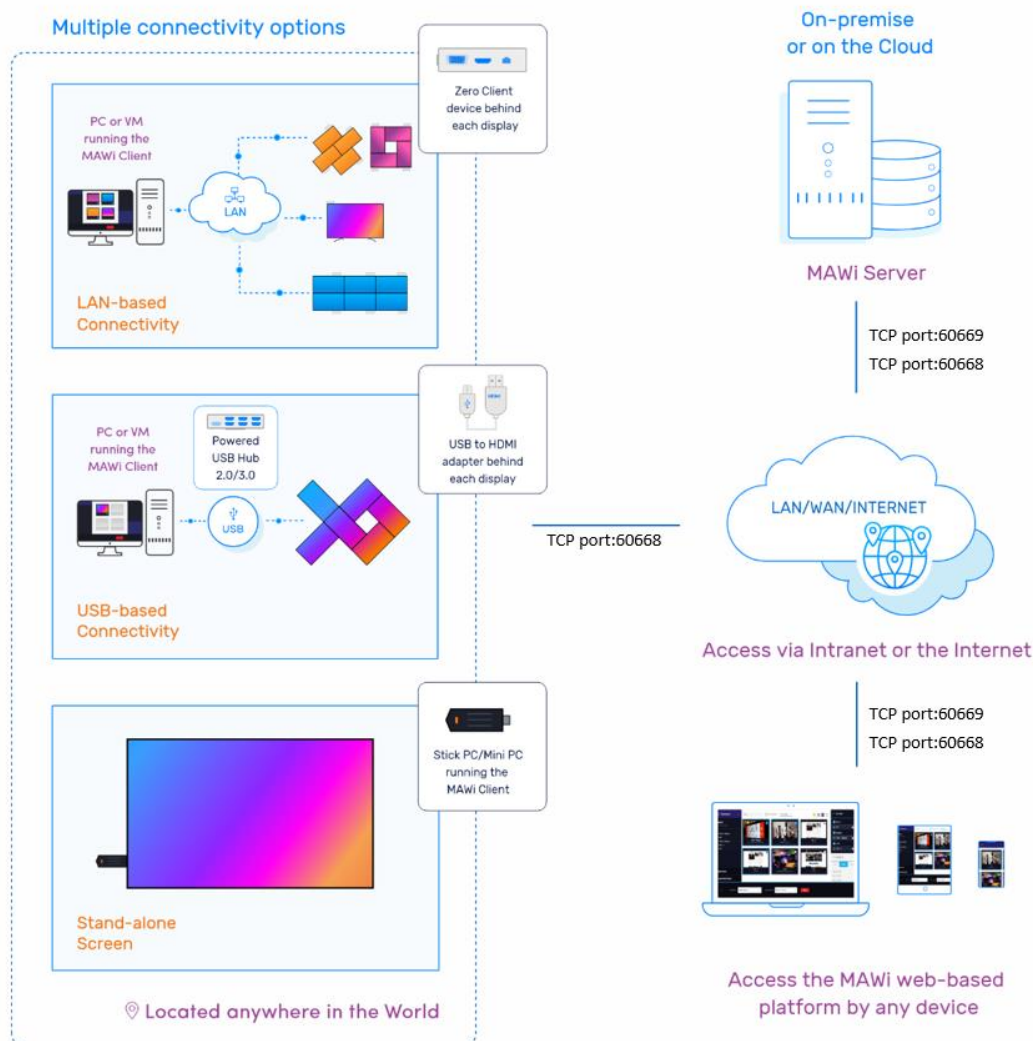


## **Evaluating the new web platform interface – MAWi**

This guide will run you through the basic steps of installing the on-premise version of MAWi (Monitors AnyWhere Web-based interface).

### **System connectivity scheme:**



### **MAWi Client side:**

PC or a virtual machine (VM) that is connected with a single monitor or multiple monitors (via multi-display video card, USB to HDMI adapters or LAN-based zero clients) and installed with MAWi Client app.

MAWi Client Connects over the default port no. 60668 to MAWi Server.

Minimum requirements: Same as shown here:

<https://www.monitorsanywhere.com/system-hardware-guide/>

### **MAWi Server side:**

The MAWi Server side can be installed on a PC or a VM and can also reside with MAWi Client app.

In the installation process it downloads and installs the following apps by default:

- SQL Server Express 2014
- IIS Express (for non-server operating systems like Windows10 Pro and Enterprise)
- NodeJS
- Web Platform Installer

In case you wish to install them manually please read this guide:

[http://monitorsanywhere.com/download/MAWi\\_files/Offline%20installation.pdf](http://monitorsanywhere.com/download/MAWi_files/Offline%20installation.pdf)

You can also select whether to install the database locally or on a remote SQL Server.

MAWi Server is running two web applications:

1. Server-side – Angular-based technology. Connects with the MAWi clients over its proprietary API.
2. Client-side – SignalR-based technology. Allow you to control the different clients from a web-based dashboard.

Communication with the server-side is done over port 60668

Communication with the client-side is done over port 60669

**Minimum requirements:** Windows10 Pro/Enterprise, Server 20012 R2, Server 2016, Server 2019

At least 4GB RAM, 150GB Hard drive.

**MAWi Web interface** – Any platform that runs Chrome, Firefox or Edge browsers can run the MAWi web-interface.

### **Installation process:**

1. **Download** the installer from the link provided by Monitors AnyWhere, extract it and Run the setup file.

2. **Quick check**

The installer will run a quick inspection on the PC to check which components are needed for the installation/update process.

3. Select which components to install

#### **MAWi Client**

Select this option to install the MAWi client on this PC.

MAWi Client should be installed on the PC where all of your screens are connected. A client and a server can reside on the same machine.

#### **MAWi Server**

Select this option to install the MAWi server on this PC.

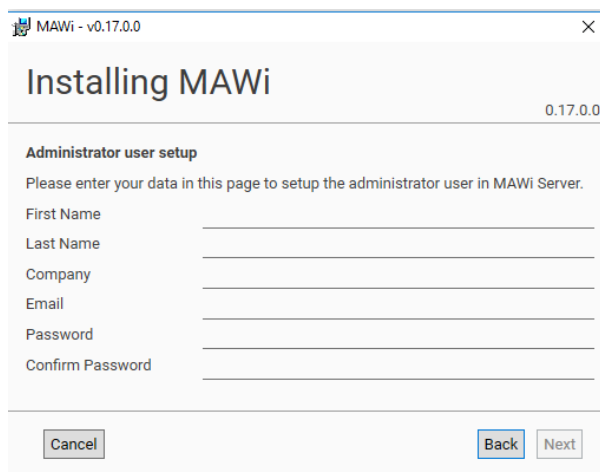
Only one server is required to manage all screens.

A client and a server can reside on the same machine.

In the installation process of the server, an SQL server database will be installed.

You can either leave the default settings to install the DB locally or to install the DB on a remote server where SQL server is already running.

#### 4. Administrator user setup



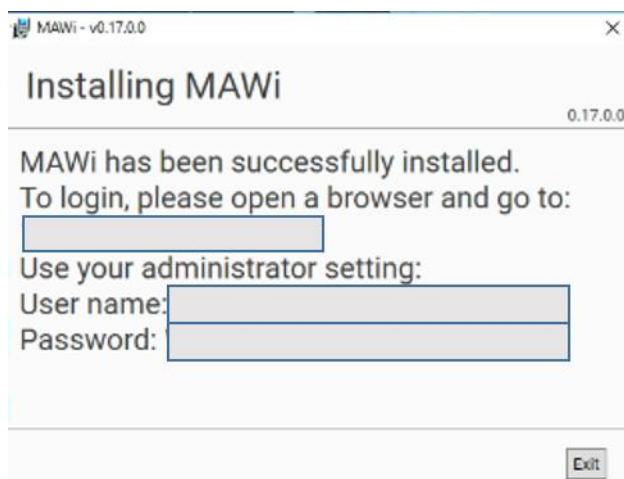
The screenshot shows a window titled "MAWi - v0.17.0.0" with a close button. The main heading is "Installing MAWi" with the version "0.17.0.0" to its right. Below this is the section "Administrator user setup" with the instruction: "Please enter your data in this page to setup the administrator user in MAWi Server." There are six input fields: "First Name", "Last Name", "Company", "Email", "Password", and "Confirm Password". At the bottom, there are three buttons: "Cancel", "Back", and "Next".

Please enter your information on this page to setup the initial administrator user in MAWi Server. The email address and password will be used for connecting the MAWi Clients to the server and for logging in to the web-platform.

#### 5. Installation of MAWi started

The installation process requires downloading several components from the Internet which may reflect on the total setup time. Please don't turn off the computer while the process is running. In case you are prompted to accept/confirm, please do so.

#### 6. MAWi installed successfully



The screenshot shows a window titled "MAWi - v0.17.0.0" with a close button. The main heading is "Installing MAWi" with the version "0.17.0.0" to its right. Below this is the message: "MAWi has been successfully installed. To login, please open a browser and go to:" followed by a text box. Then it says "Use your administrator setting:" followed by two input fields: "User name:" and "Password:". At the bottom right, there is an "Exit" button.

Once the installation process is finished, you will receive the page above with instructions how to connect to the web interface and also the username and password.

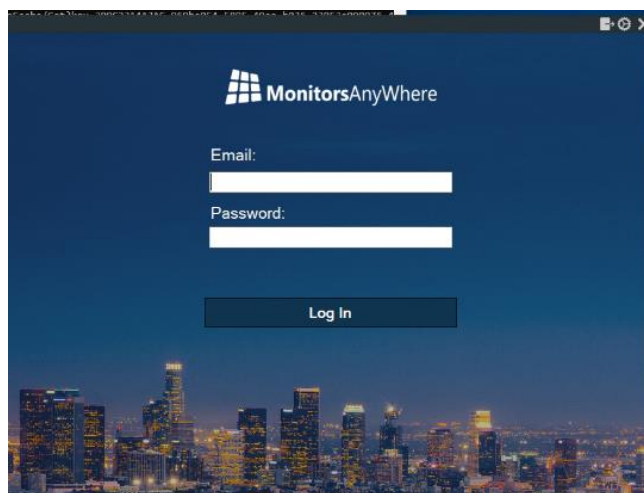
**Please note:**

If the system was installed on Windows10 Pro/Enterprise machine, you will need to make sure IIS Express command-prompt runs at all times on the PC. You can restart it if needed from here:

Go to : C:\Program Files (x86)\Monitors AnyWhere\Common  
Run the file 'IISExpressDeployServer' with Admin privileges.

**Installing the MAWi Client**

1. Once installed, the client app will automatically runs on the host PC and request for the username and password:

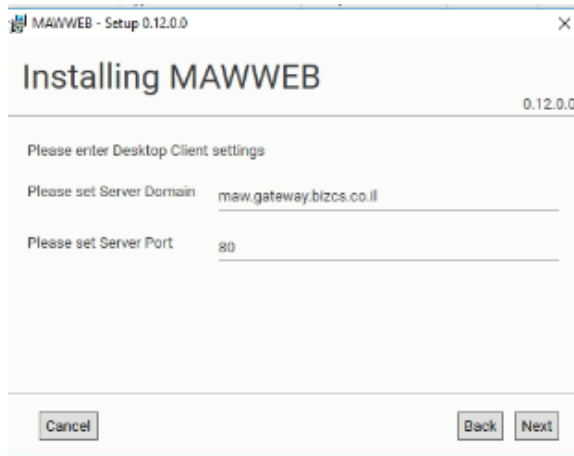


Please use the same authentication used when installing the server.

**To add more Client sites:**

In case you've installed the client without the server, make sure to setup the IP address and gateway address according to the correct parameters.

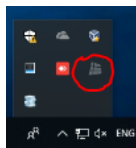
On the installation process you will be requested to enter the server IP or host name and its port number:



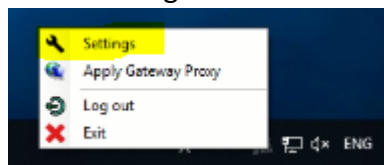
Enter your server's IP address or hostname.

**For the Server port, use the default: 60668**

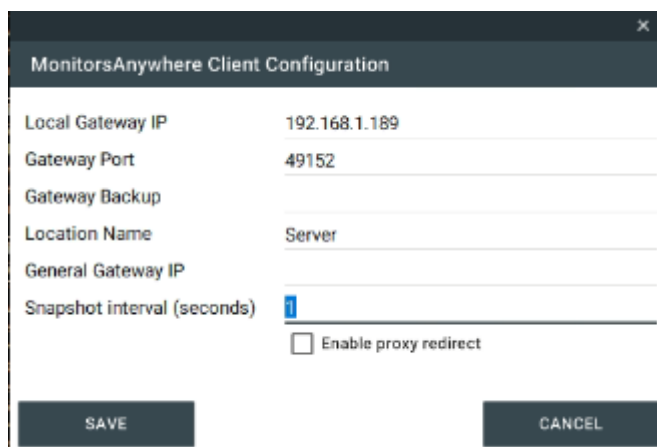
You can always change those with right-click on MAWi's client icon in the taskbar:



Go to Settings:

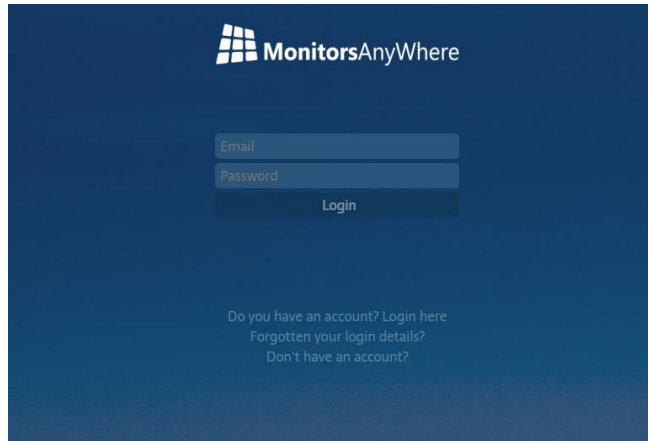


This window will open:



## How to use the web interface of MAWi

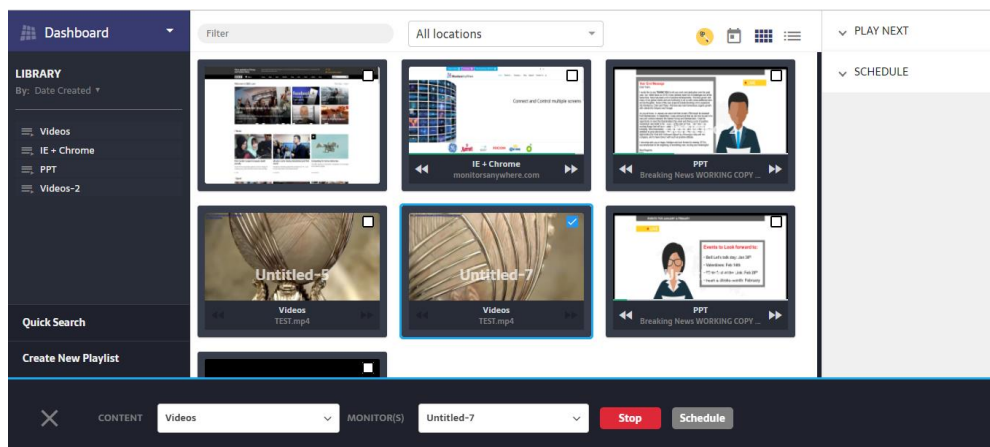
1. Login with your username and password with a browser:



In the URL enter the IP address or Server's name in the following way:

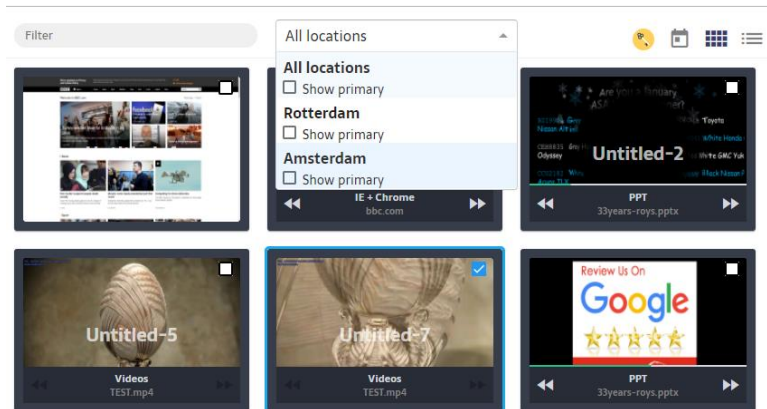
http://<Server-name or IP address>:60669

2. Welcome to the new MAWi platform:



## Quick introduction to the different sections of the main console:

### Control multiple sites or a specific one:



You can run the Client app on multiple PCs and control all of them from a single platform. Select 'All Locations' to view all or select one from the drop-down list a specific location. You can also set it to hide the primary monitor of each location.

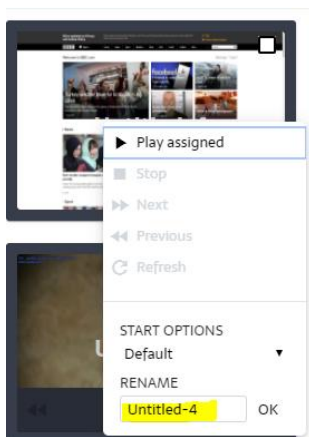
### Identify screens



By pressing on this icon, an ID screen will show up on all monitors.

### Name each screen

Right-click on the name of each screen and re-name it according to its actual location and purpose.

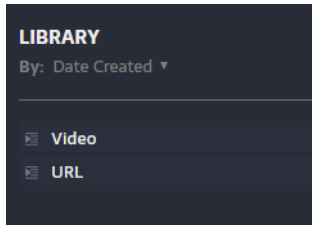




### **Create a library of playlists:**

A library of playlists that are saved in the system in two categories:

Global and Local.

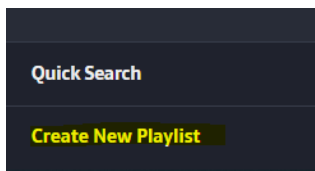


**Global Playlist** is a playlist that can be used on all screens and locations in the system. Mainly used for generic files such as Videos, Presentations, URLs, etc...

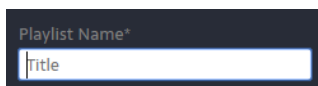
**Local Playlist** is configured specifically for a location, with its specific applications that are installed in that location. Mainly used to run a specific app, for an example:

PDF file that requires a specific viewer application to run or XnView to open a slideshow file.

To create a new playlist, click on 'Create new playlist':



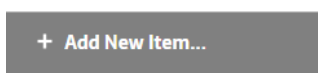
Select a name for the playlist:

A screenshot of a dark-themed user interface. It shows a text input field with the placeholder text "Playlist Name\*" in a light gray font. Below the placeholder, the word "title" is visible in a light gray font, indicating the current input or a default value.

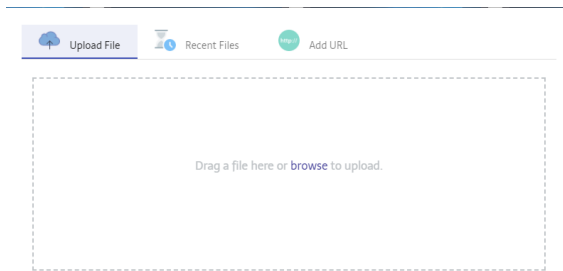
Select either Generic or a specific location:



And click 'Add new item':



On this window you can either upload a file from your PC or select a URL to run with IE or Chrome:



You can also use recent files that were already uploaded in the past.

Once done, click on **Save**.

### How to play a playlist:

To run a playlist on one screen or multiple screens, first select the screens by ticking the checkbox.

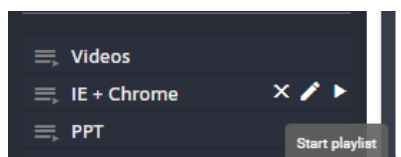


You can either use the Ctrl button to multi select screens or Ctrl+A to select all screens in the view.

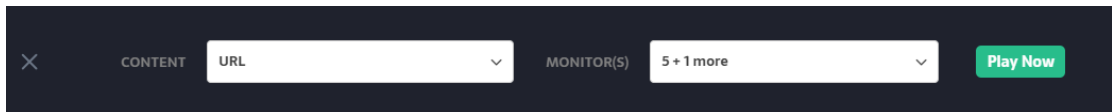
Assign a playlist to a screen or multiple screens by dragging and dropping the playlist on the screen's thumbnail:



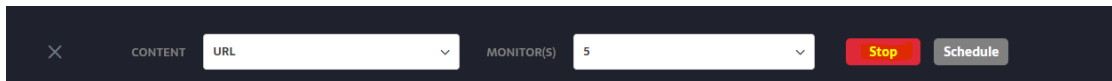
Another way is to simply press on the Play button in the library:



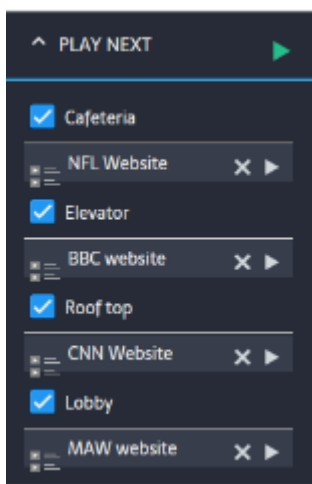
Or to use the quick Play popup at the bottom of the screen:



To stop a Playlist, press on the Stop button:



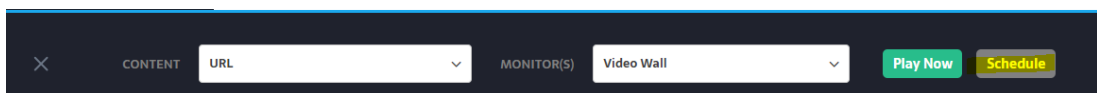
You can also assign each screen with its own playlist and start running all of them from the Play Next console:



### **Scheduling playlists**

Once you've created a playlist, it's easy to set each screen to run a multiple playlists according to a calendar setting.

Select the screen and click on Schedule:



You can set the playlist to run on a Daily, Weekly and Monthly basis:

Schedule

OFF

DAILY

WEEKLY

RANGE

☐ All Day

Start Time:

Finish Time:

☐ Monday

☐ Tuesday

☐ Wednesday

☐ Thursday

☐ Friday


☐ Saturday

☐ Sunday

Save Schedule

Once done, click **Save Schedule** and the new setting will be applied.

To view the setting in a calendar view, click on this button:

A small icon of a calendar with a grid of days, enclosed in a blue square border.