

# How to set up Windows10 device to run with the Online Monitors AnyWhere app

A regular PC with Windows 10 on it, is in general a very solid digital signage setup. In this guide we'll show you how to install and configure Chromium as the browser that is used for channel playback. We also describe what you should do to have the PC shut down automatically and startup everything automatically when you switch it on again.

## 1. Latest Video Drivers

For optimal graphics performance, make sure you are running the latest video drivers on your computer.

On the bottom left, click the Windows icon and then the gear icon.

Type Display in the search field at the top of the window.

Click **Display settings**.

Click **Advanced display settings**.

Click **Display adapter properties**.

On the **Adapter** tab click the **Properties** button.

On the **Driver** tab click **Update driver**.

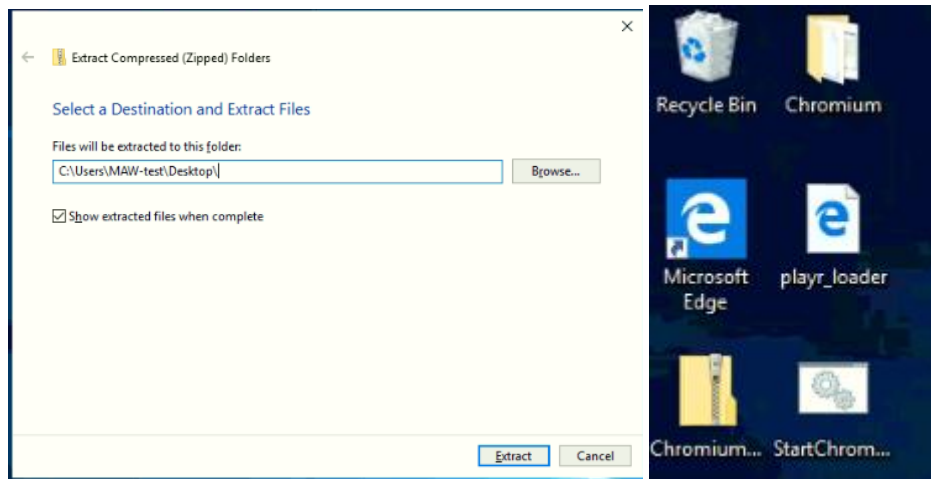
Click **Search automatically for updated driver** software.

A message will appear to tell you the driver is up to date or instructions on how to update your driver.

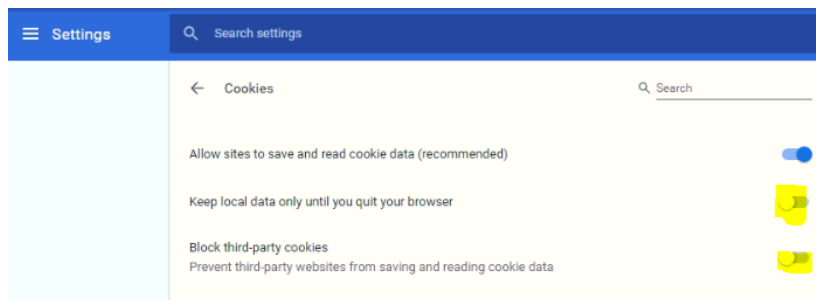
## 2. Chromium Installation And Automatic Start

We recommend installing version 75 of Chromium as the browser platform for Online Monitors AnyWhere, since Chromium does not automatically update to a newer versions.

- a. Download [Chromium 75](#), which includes our auto-start script.
- b. Unzip the file to the **desktop of your computer**. (Don't create a folder but simply extract all on the actual desktop:

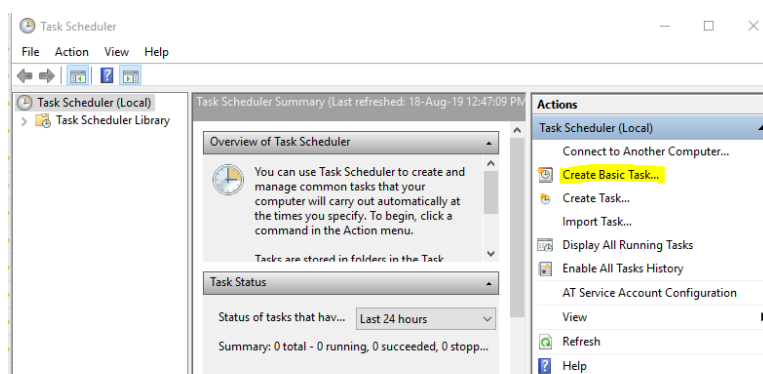


- c. Open the Chromium folder on your desktop and **start Chrome.exe** by double clicking on it. You might need to accept a security warning by Windows Defender.
- d. In the address bar type **chrome://settings/content/cookies** and make sure the following options are **turned off**:
  - Keep local data only until you quit your browser
  - Block third-party cookies

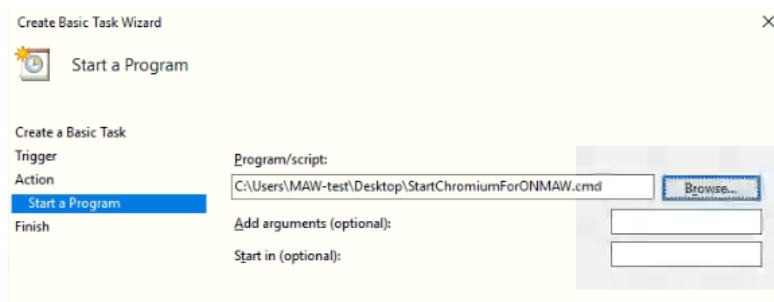


### Close Chromium.

- e. On the bottom left, click the Windows icon and then type Schedule.
- f. Click on the **Task Scheduler**.
- g. Choose Create basic task and name it Start Chromium for ONMAW, click Next.



- h. Set that this task has to be executed **When I log on**, click Next.
- i. Choose the action **Start a program**, click Next.
- j. Click the Browse button and select the StartChromiumForONMAW.cmd file on the desktop.



- k. To make startup more smooth: check “Open the Properties dialog for this task when I click Finish” before you click Finish.
- l. Go to the Triggers tab, click **At log on trigger** and choose **Edit...**
- m. Under Advanced settings, check Delay task for and choose 30 Seconds. This way Chromium will start up 30 seconds after Windows has started. This will allow for network and internet connections to have been established.

### 3. How to set your PC to auto logon

On the bottom left, **click the Windows icon** and then type **netplwiz** and press enter.

In the User Accounts window that pops up, uncheck the Users must enter a user name and password to use this computer option and press **Apply**.

You will be prompted for the user's password, after which you can accept the new configuration with Ok.

Then remove the last sign-in restriction with the following steps:

### 4. Disable Energy Saving Mode

To make sure that the screen does not turn black after a few minutes, do the following:

On the bottom left, **click on the Windows icon** and then the gear icon.

Type **Power** in the search field at the top of the window.

Click on **Power & Sleep Settings**.

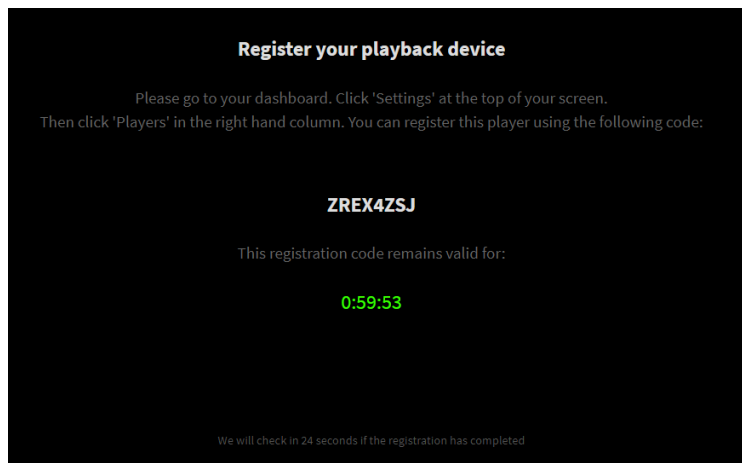
Select **Never** for all options.

### 5. Disable Windows Auto-Updates

[Download StopUpdates10](#) app and install it on your PC.

## How do you know if everything went well?

You should be seeing this screen when turning on the device:

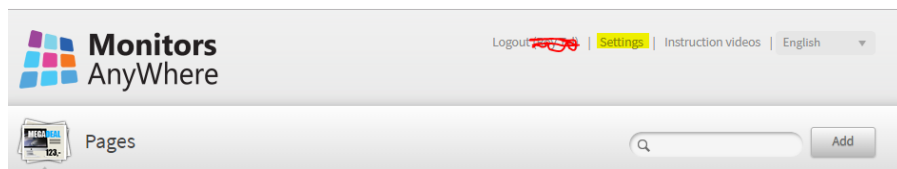


## How to assign a Player to a Windows10 device

On your PC, login with your username and password to the Online Monitors AnyWhere website:

<http://online.monitorsanywhere.com>

Go to Settings:



Select Players:

- Overview
- Settings
- Active screens
- Dashboards
- Users
- Players**
- Auth. accounts

Enter the registration code that you see on the TV, name the Player and select a Channel from the drop down list. Press Register to start playing the content on the TV:

# Players

using address <http://online.monitorsanywhere.com/play>

## Register new player

---

Registration code

Name

Channel

Register